

COOL SLATE, WARM WOOD

Foggy-gray tile and stone are the backdrop for a splendid Douglas-fir cabinet

"Give it the spirit of Japanese architecture, but don't create a literal copy." That's the essence of what Wayne Lovegrove's clients requested when describing how they wanted to transform their master bath. With its sloped ceiling, generous skylight, and view of an evergreen forest, the original bath had plenty of attributes. But style and substance were not among them. The existing economy-grade materials, too-low counter, and fixtures were to be completely replaced. To maximize investment in quality design and materials, there would be no structural or plumbing-location changes.

Lovegrove's design began with the subtle organizational underpinnings that characterize traditional Japanese homes. The floor is a grid of custom-cut slate tiles centered on both the sink and the toilet. The cabinet, made of vertical-grain Douglas fir, features doors and drawers with delicate reveals between rails, stiles, and panels. The counter, raised now to a comfortable height, steps down to become the windowsill. It is a schist slab, double thick at the edges for a sense of solidity. The new bath captures the calm richness of traditional Japanese architecture without having an overt Japanese style.

Design: Wayne Lovegrove, Lovegrove Design, Kenmore, Wash.; www.wlovegrovedesign.com

Builder: Cieplik Brothers Construction, Tacoma, Wash.



SOURCES

PLUMBING FIXTURES

Toilet: Toto UltraMax
Faucet: Arwa Twin

WALL AND SHOWER TILE

Casalgrande Pietre Native Blue Moon series
Decorative tiles distinguished as Decoro Assortito

DOOR AND DRAWER PULLS

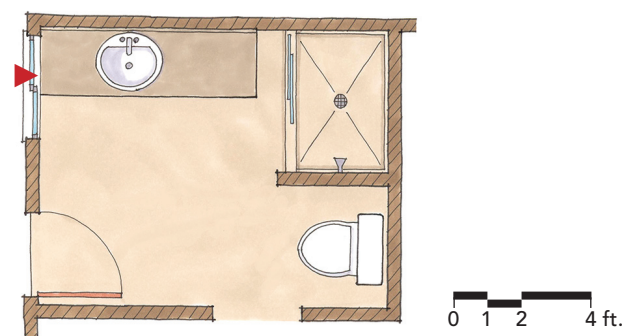
Whitechapel: 58CABAR5

LIGHT FIXTURE

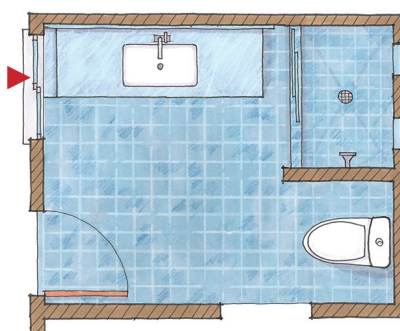
Minka Lavery



BEFORE



AFTER



BEFORE

Photos: Charles Miller, except "before" photo courtesy of Wayne Lovegrove. Drawings: Martha Garstang Hill.